

Behavior Tracker on the Go

Behavior Tracker on the Go

Practical Solutions For Educators
937.642.7755
www.psfe.com fmgo@psfe.com

District Heading: PSFE Local Schools
Expiration: 12/31/16
Registration #:
Version: 1.0v1 Device ID: 459633
User Name: Roy Gordon Building: East Elementary

Buttons: Register, Students, Observations, Create New, Behaviors

Date	Student/Group	Start	End	Type of observation
11/18/2016	John Doe	3:00	3:20	In
11/18/2016	Bill W		2:30	N
11/17/2016	Group		10:15	F
11/16/2016	Lark Terry	8:35	8:55	D

Annotations:

- Enter registration information (points to District Heading)
- Enter students to observe. You must enter a student first to create an observation. Student can also be assigned to 3 different groups. (points to User Name)
- See all previously created observations. (points to Observations button)
- View most recent observations. Tap > to see the observations. (points to > button in table)
- Close Program (points to X icon)
- Tap to create a new observation (points to Create New button)
- Enter all of the potential behaviors that will be observed. (points to Behaviors button)
- Type of observation (points to Type of observation column header)

Create New Observation

Clear student, group and behavior → Clear

Select Student or Select Group

Select Behavior

Select Behavior

Select Student

Create Narrative Observation, Create Duration Observation, Create Frequency Observation, Create Interval Observation

Annotations:

- Select a student or a group of students for the observation. (points to Select Student/Group)
- Select the type of observation you want to create. (points to Create Narrative/Duration/Frequency/Interval buttons)
- Select the beginning observation for a group frequency observation. (points to Select Behavior)
- You must select a behavior and a student to create an interval observation. (points to Select Behavior and Select Student)

Observation List

View All Observation

Delete Observation

Delete Observation

Filter list

Date	Start	End	Student/Group	Type of observation
11/18/16	3:00	3:20	John Doe	Interval
11/18	00	2:30	Bill Williams	Narrative

Annotations:

- Tap to Sort (points to Date column header)
- Type of observation (points to Type of observation column header)
- Go to the observation (points to > button)

Behaviors

Tap to delete a behavior

Tap to create a new behavior

Enter behaviors used in the observations

Behavior Values	Appropriate	View in:
Appropriate Classroom Behavior	<input checked="" type="checkbox"/>	<input checked="" type="checkbox"/> Frequency <input checked="" type="checkbox"/> Duration <input type="checkbox"/> Interval
Did not follow teacher directions	<input type="checkbox"/>	<input checked="" type="checkbox"/> Frequency <input checked="" type="checkbox"/> Duration <input type="checkbox"/> Interval
Did not raise hand to ask question	<input type="checkbox"/>	<input checked="" type="checkbox"/> Frequency <input checked="" type="checkbox"/> Duration <input type="checkbox"/> Interval
Distracted by objects in desk	<input type="checkbox"/>	<input checked="" type="checkbox"/> Frequency <input checked="" type="checkbox"/> Duration <input type="checkbox"/> Interval
Followed teacher directions	<input checked="" type="checkbox"/>	<input checked="" type="checkbox"/> Frequency <input checked="" type="checkbox"/> Duration <input type="checkbox"/> Interval
Inappropriate Classroom Behavior	<input type="checkbox"/>	<input checked="" type="checkbox"/> Frequency <input checked="" type="checkbox"/> Duration <input type="checkbox"/> Interval
Out of seat	<input type="checkbox"/>	<input checked="" type="checkbox"/> Frequency <input checked="" type="checkbox"/> Duration <input type="checkbox"/> Interval
Playing with objects in desk	<input type="checkbox"/>	<input checked="" type="checkbox"/> Frequency <input checked="" type="checkbox"/> Duration <input type="checkbox"/> Interval
Raise hand to ask question or respond	<input checked="" type="checkbox"/>	<input checked="" type="checkbox"/> Frequency <input checked="" type="checkbox"/> Duration <input checked="" type="checkbox"/> Interval

If the behavior is an appropriate behavior, check this box.

Select the observations for each behavior. The behaviors will then be available for the specified observations.

Return to previous screen

Narrative Behaviors (check mark appropriate behaviors)

Followed teacher directions	<input checked="" type="checkbox"/>	
Did not follow teacher directions	<input type="checkbox"/>	
Responded appropriately to teacher	<input checked="" type="checkbox"/>	
Responded inappropriately to teacher	<input type="checkbox"/>	
Raised hand to ask question	<input checked="" type="checkbox"/>	
Didn't raise hand to ask questions	<input type="checkbox"/>	
Appropriate interactions with others	<input checked="" type="checkbox"/>	
Distracted by other objects	<input type="checkbox"/>	
Out of seat	<input type="checkbox"/>	
	<input type="checkbox"/>	
	<input type="checkbox"/>	
	<input type="checkbox"/>	
	<input type="checkbox"/>	
	<input type="checkbox"/>	
	<input type="checkbox"/>	
	<input type="checkbox"/>	
	<input type="checkbox"/>	
	<input type="checkbox"/>	

Check if the behavior is appropriate. Appropriate behaviors will turn bold.

Enter the behaviors that you want to make available for the Narrative observation. You can enter up to 90 behaviors.

Enter Student Groups (1 per line)

Group 1
Group 2
Group 3

Enter all of the potential groups that you might assign a student. A student can belong to three different groups.

Tap to the right side of the dots to move right or tap the left side to move to the left. There are three sets of behaviors. You can also use a one finger swipe to move between the behaviors.

Duration Observation

iPad 6:15 PM 12%

er_otg (Roy's MacBook Pro)

Lark Terry Classroom 11/20/2016 PDF

Tap **Save** to save the observation results to the history of results.

Tap **Clear** to clear the results to start a new observation for the student.

STUDENT				Behaviors				PEER			
Stop	Clear	Save		Appropriate Classroom Behavior	<input checked="" type="checkbox"/>	00:54	75.0%	4	Start	Clear	Stop
Start	3	00:30	41.1%		<input type="checkbox"/>	00:06	8.3%	1	Start		
Start	1	00:12	16.4%		<input type="checkbox"/>		0.0%		Start		
Start	1	00:04	5.5%		<input type="checkbox"/>		0.0%		Start		
Start	1	00:16	21.9%	Out of seat	<input type="checkbox"/>		0.0%		Start		
Start	1	00:11	15.1%	Playing with objects in desk	<input type="checkbox"/>		0.0%		Start		
Start			0.0%	Inappropriate Classroom Behavior	<input type="checkbox"/>	00:12	16.7%	2	Start		

Tap **Stop** when you are finished with the observation. Times and percents will automatically calculate

Enter observations for the duration observation. The first observation should be an appropriate behavior.

Create a PDF or print the observation

The numbers indicate the number of times the Start button was tapped.

To start the observation tap the appropriate Start button. As the behavior changes, tap the corresponding Start button. The current behavior button will turn red.

S:6:06:19 E:6:07:32 Appropriate S: 41.1% P: 75.0% S:6:06:21 E:6:07:33

Note

When compared to a typical peer in the classroom, Lark displayed appropriate classroom only 41.1 % of the time. The peer displayed appropriate behavior 75% of the time.

Enter notes for the observation

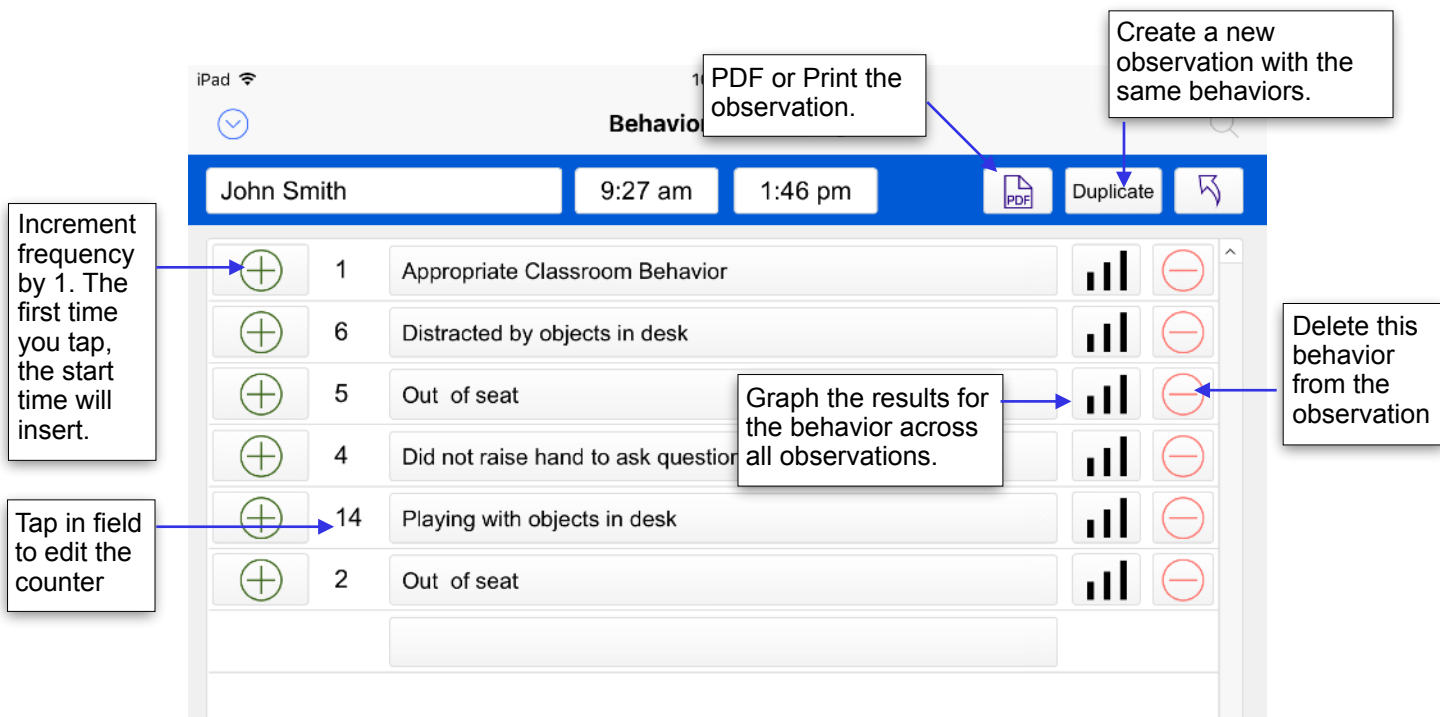
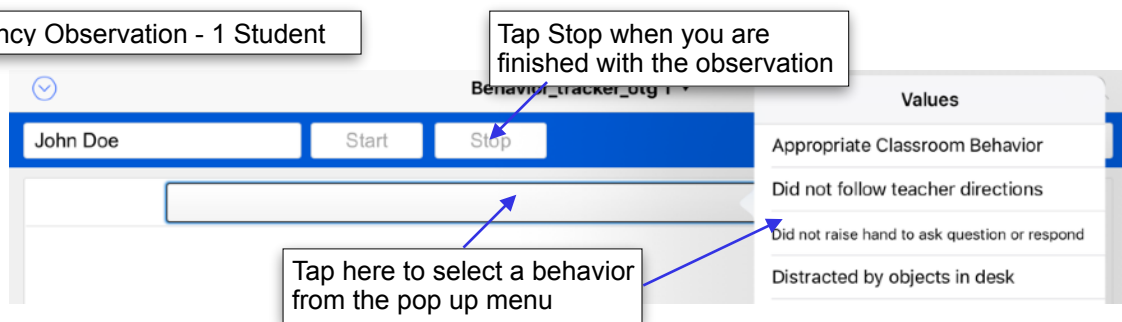
Date	Target	Alt 1	Alt 2	Alt 3	Alt 4	Alt 5	Alt 6	Alt 7	Alt 8	Alt 9	Appropriate Student	Appropriate Peer
11/20/16	41.1%	16.4%	5.5%	21.9%	15.1%	0.0%					41.1%	75.0%
History of results												

Create a PDF or print history

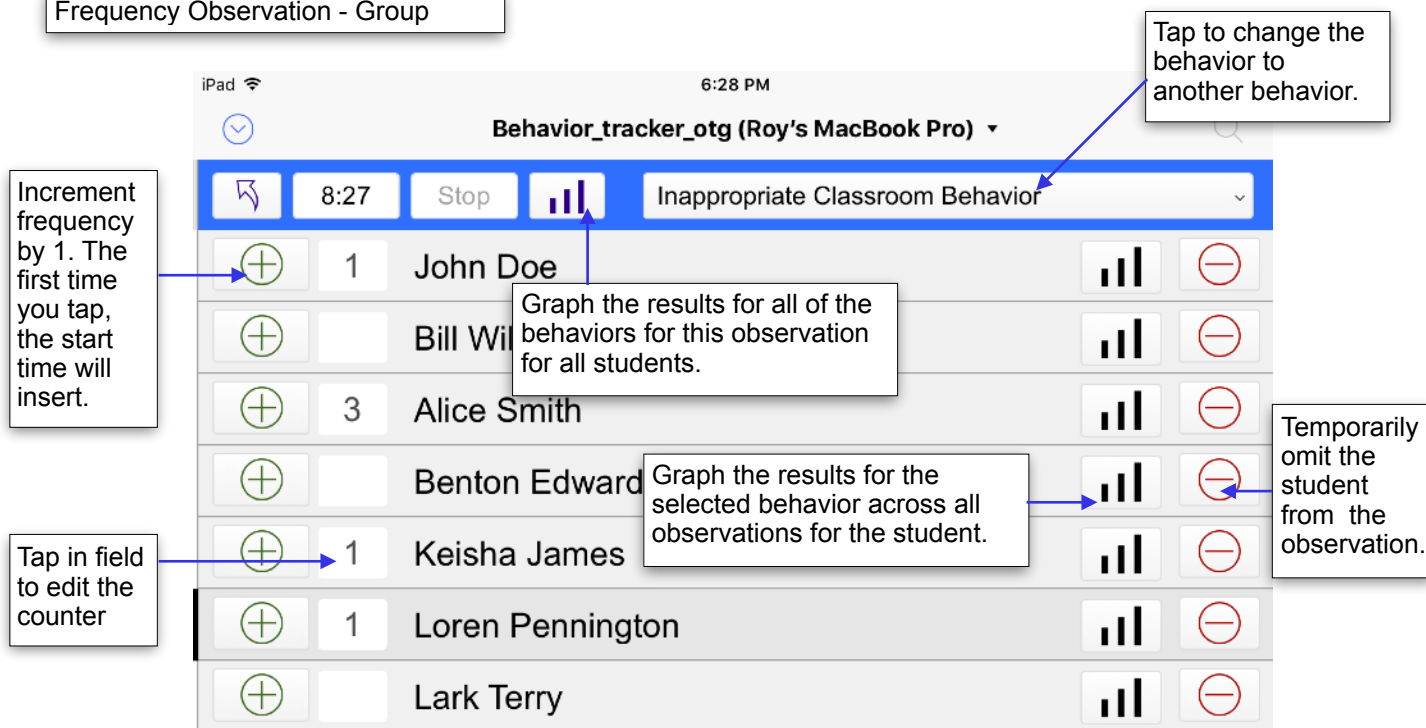
Graph the history

Tap a row and then tap the trash to delete the row.

Frequency Observation - 1 Student



Frequency Observation - Group



Narrative Observation

Dropbox 10:25 AM

Behavior_tracker_otg ▾

Mary Smith 10:25:07 End PDF ↶

Followed teacher directions

Did not follow teacher directions

Responded appropriately to teacher

Responded inappropriately to teacher

Raised hand to ask question

Didn't raise hand to ask questions

Appropriate interactions with others

Distracted by other objects

Out of seat

Appropriate Behavior Inappropriate Behavior On-task Off-task Oops

10:25:12 Responded inappropriately to teacher

10:25:17 **On-task**

10:25:25 Off-task

10:25:29 Didn't raise hand to ask questions

10:25:32 Out of seat

10:25:39 **Followed teacher directions**

Tap End when you are finished with the observation.

Return to previous screen.

PDF or Print the observation.

Tap an Item to insert the item into the narrative. Bold items are appropriate items.

Tap to delete the last entered item.

Tap to the right side of the dots to move right or tap the left side to move to the left. There are three sets of behaviors. You can also use a one finger swipe to move between the behaviors.

Create New Student

Delete Student

Create New Student

Enter Students

First Name Last Name Student Number DOB

Group: Group ▾

Edwards /2005

Group: Group 1 ▾

Group 1 ✓

Group 2

Assign a student to 3 different groups.

Interval Observation

Tap Stop when you are finished with the observation.

Select the number of seconds for the interval.

Graph the observations for this student and behavior.

Tap Yes or No button if the behavior is observed.

The start time will insert the first time you tap Yes or No.

Percent of Yes during the observation

Log of entries

Previous observations. Tap the date to go to the observation.

Date	Behavior	Percent
11/20/16	Out of seat	57.1%
11/20/16	Out of seat	37.5%
11/20/16	Out of seat	33.3%

When the app is counting down the interval, the screen will gray, the buttons will disappear, a spinning gear will appear, and the menubar will turn blue. You can not stop the observation until the count down has completed.

Yes 2

No 1

66.7%

Comments

Log of entries

Previous observations. Tap the date to go to the observation.

Date	Behavior	Percent
11/21/16	Inappropriate Classroom Behavior	66.7%